



Allgemeine Hinweise

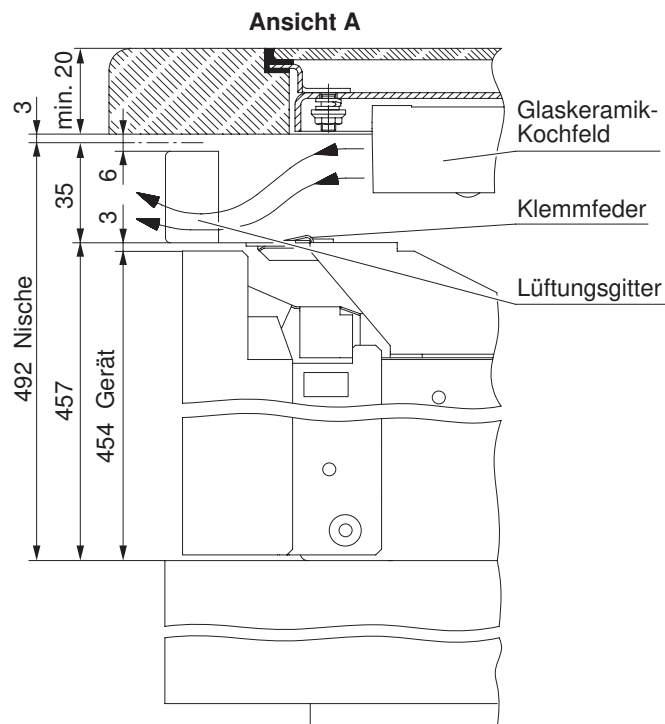
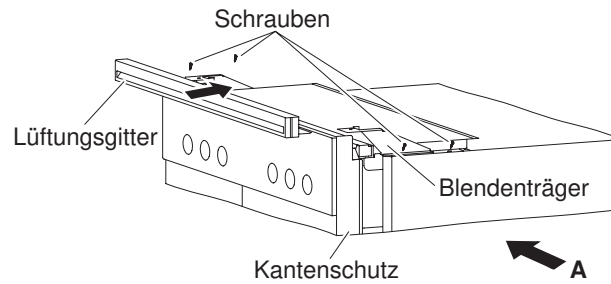
Siehe Installationsanleitungen für Glaskeramik-Kochfelder.

Bausätze Lüftungsgitter

| Art.-Nr. | Farbe | Bauform | Erforderliche Nischengröße | Geräteabmessung |
|----------|-----------------------------|---------|----------------------------|------------------------|
| H6.0039 | Nero | 60-450 | B x H = 60 x 49,2 cm | B x H = 59,6 x 45,4 cm |
| H6.0041 | ChromeClass | | | |
| H6.0053 | ChromeClass (TouchClean) | | | |

Installation

- Blendenträger links/rechts mit je 2 Schrauben mit Deckblech vorne verschrauben.
- Lüftungsgitter vorsichtig bis zum Anschlag einschieben und mit Klemmfeder befestigen.



Notice d'installation

Grille d'aération pour un four
Type de construction 60-450



J402.50-1

7.6.11 ZES

Indications générales

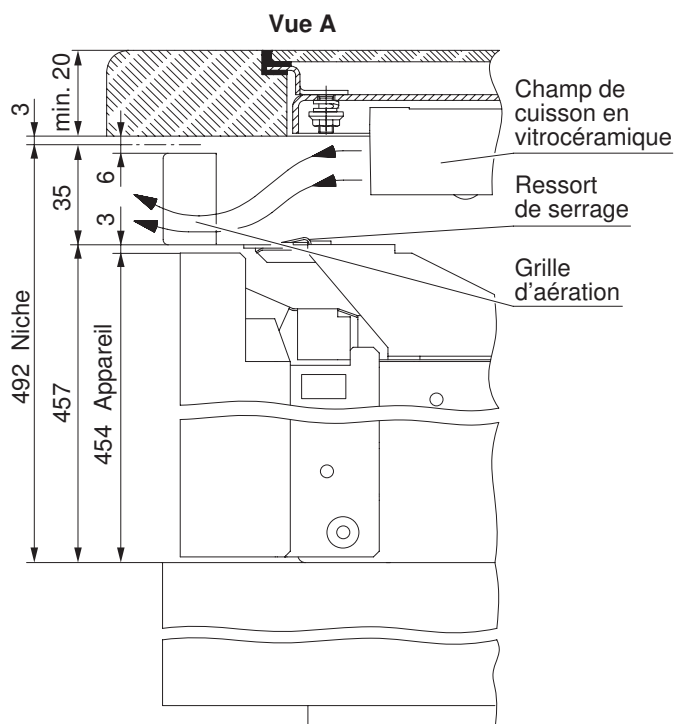
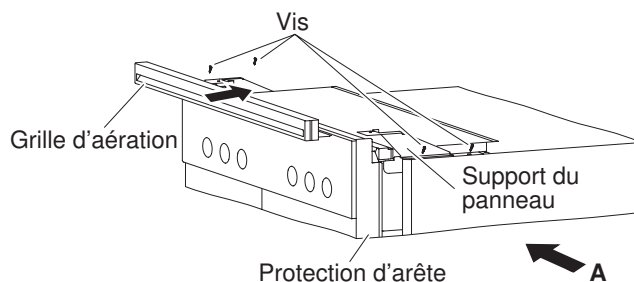
Voir notice d'installation pour champ de cuisson en vitrocéramique.

Sets de grille d'aération

| No d'article | Couleur | Type de construction | Dimension nécessaire de la niche | Dimension de l'appareil |
|--------------|-----------------------------|----------------------|----------------------------------|-------------------------|
| H6.0039 | Nero | 60-450 | L x H = 60 x 49,2 cm | L x H = 59,6 x 45,4 cm |
| H6.0041 | ChromeClass | | | |
| H6.0053 | ChromeClass (TouchClean) | | | |

Installation

- Visser le support du panneau gauche/droite vissé avec 2 vis (de chaque côté) à la tôle de recouvrement devant.
- Pousser prudemment la grille d'aération jusqu'en butée et fixer par le ressort de serrage.





Indicazioni generali

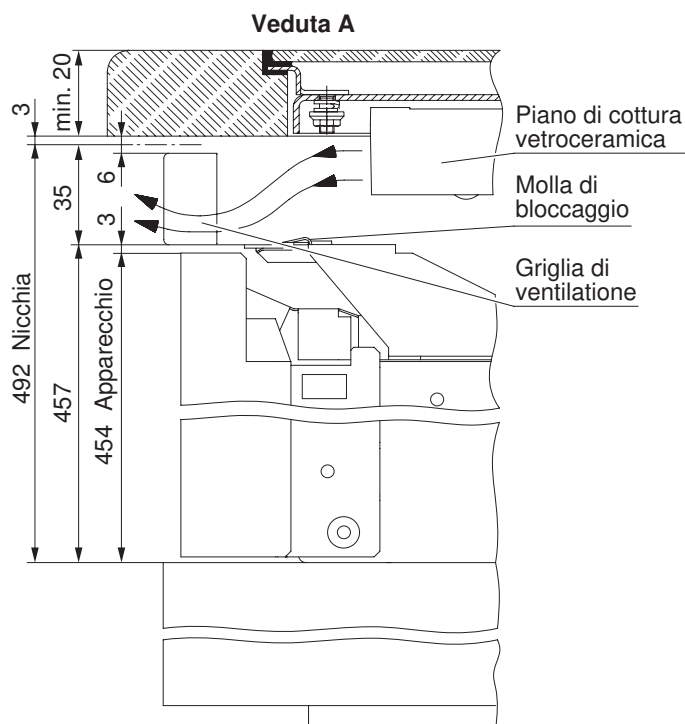
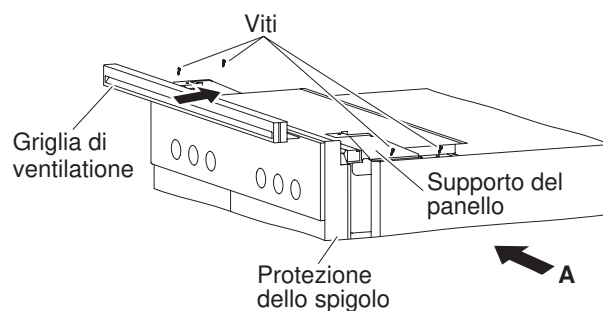
Vedere istruzioni d'installazione per piano di cottura vetroceramica.

Kit di montaggio per la griglia di ventilazione

| Art. n. | Colore | Forma costruttiva | Dimensione della nicchia richieste | Dimensione dell'apparecchio |
|---------|--------------------------|-------------------|------------------------------------|-----------------------------|
| H6.0039 | Nero | 60-450 | L x A = 60 x 49,2 cm | L x A = 59,6 x 45,4 cm |
| H6.0041 | ChromeClass | | | |
| H6.0053 | ChromeClass (TouchClean) | | | |

Installazione

- Avvitare il supporto del pannello con 2 viti a sinistra e 2 a destra alla lamiera di copertura davanti.
- Infilare con cautela la griglia di ventilazione fino all battuta d'arresto e fissare con molla di bloccaggio.



Installation instructions

Ventilation meshes for oven
Type of construction 60-450



J402.50-1

7.6.11 ZES

General information

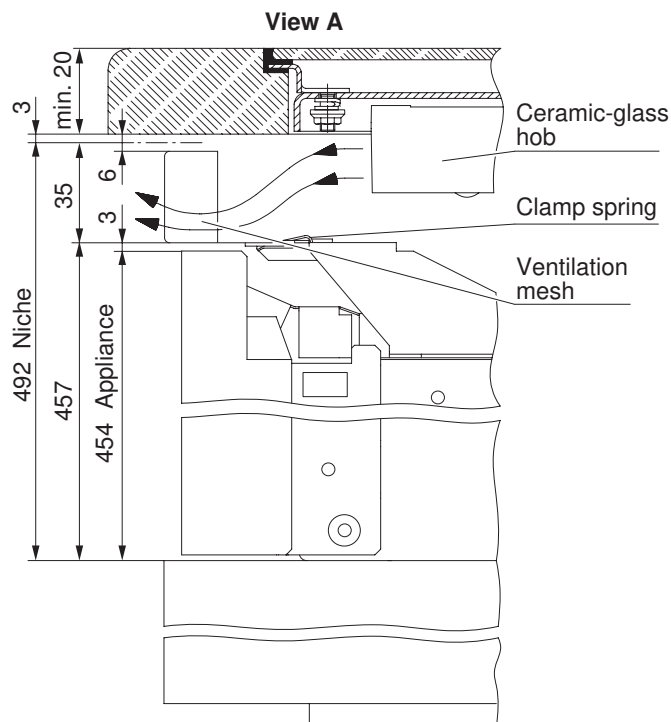
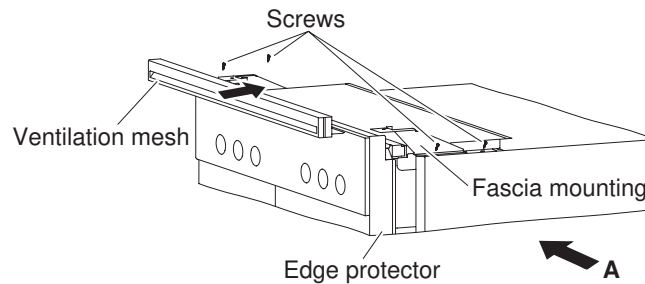
See installation instructions for ceramic-glass hobs.

Mounting sets for ventilation meshes

| Art. no. | Colour | Type of construction | Required niche size | Appliance dimensions |
|----------|-----------------------------|----------------------|----------------------|------------------------|
| H6.0039 | Nero | 60-450 | B x H = 60 x 49.2 cm | B x H = 59.6 x 45.4 cm |
| H6.0041 | ChromeClass | | | |
| H6.0053 | ChromeClass (TouchClean) | | | |

Installation

- Mount the fascia mountings left and right with 2 screws to the cover plate in front.
- Carefully insert ventilation mesh as far as the stop and fix with the clamp spring.





Indicaciones generales

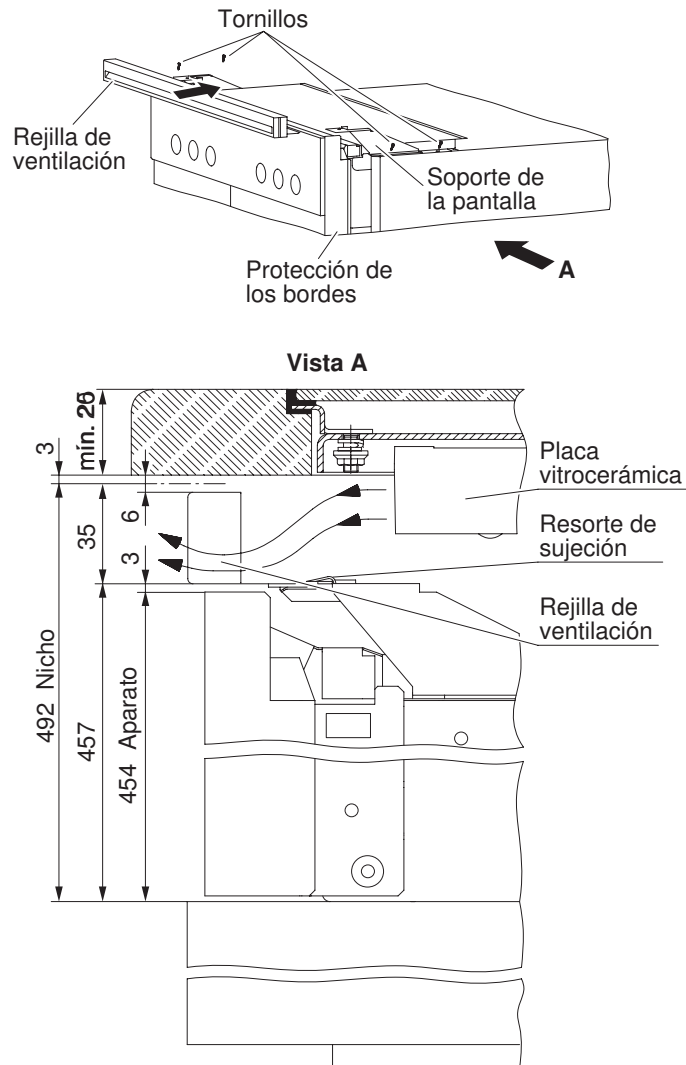
Ver las instrucciones de instalación para placas vitrocerámicas.

Kits de rejilla de ventilación

| Núm. de artículo | Color | Modelo | Tamaño de nicho necesario | Dimensiones del aparato |
|------------------|--------------------------|--------|---------------------------|-------------------------|
| H6.0039 | Nero | 60-450 | A x H = 60 x 49,2 cm | A x H = 59,6 x 45,4 cm |
| H6.0041 | ChromeClass | | | |
| H6.0053 | ChromeClass (TouchClean) | | | |

Instalación

- Atornille el soporte de la pantalla a izquierda/derecha con 2 tornillos a tapadera delante.
- Introduzca cuidadosamente la rejilla de ventilación hasta el tope en sujeción con resorte de sujeción.





Notas gerais

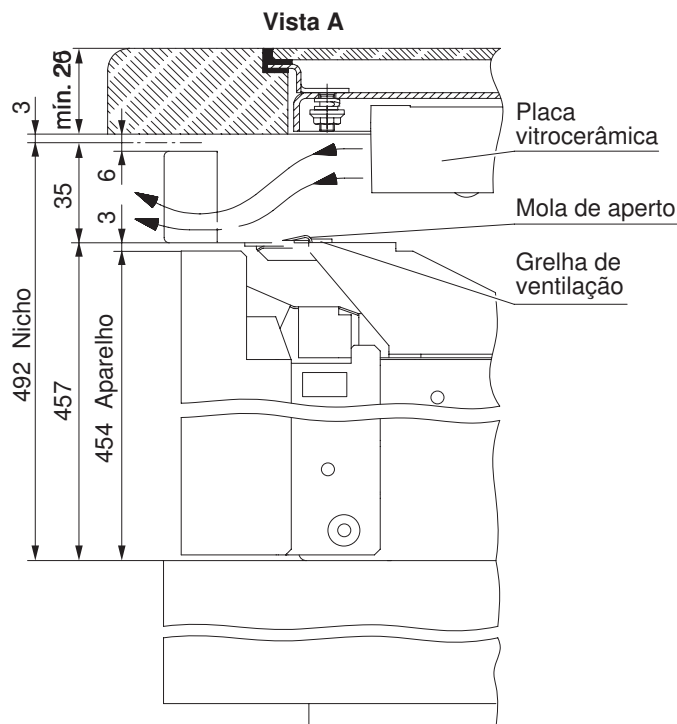
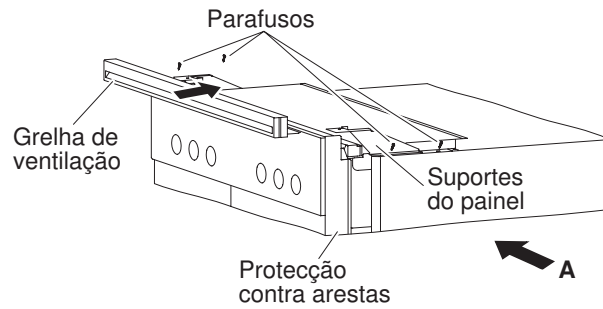
Consulte o manual de instalação para placas vitrocerâmicas.

Conjuntos de grelhas de ventilação

| Núm. de artigo | Cor | Modelo | Dimensões necessárias do nicho | Dimensões do aparelho |
|----------------|--------------------------|--------|--------------------------------|------------------------|
| H6.0039 | Nero | 60-450 | L x A = 60 x 49,2 cm | L x A = 59,6 x 45,4 cm |
| H6.0041 | ChromeClass | | | |
| H6.0053 | ChromeClass (TouchClean) | | | |

Instalação

- Aparafusar os suportes do painel no lado esquerdo/direito com 2 parafusos, respectivamente, à placa de tampa frente.
- Empurrar a grelha de ventilação cuidadosamente até ao batente e fixar com mola de aperto.





Algemene aanwijzingen

Zie installatiehandleidingen voor glaskeramische kookvelden.

Bouwpakketten ventilatioosters

| Artikelnr. | Kleur | Uitvoering | Vereiste nisgrootte | Afmetingen van het toestel |
|------------|-----------------------------|------------|----------------------|----------------------------|
| H6.0039 | Nero | 60-450 | B x H = 60 x 49,2 cm | B x H = 59,6 x 45,4 cm |
| H6.0041 | ChromeClass | | | |
| H6.0053 | ChromeClass (TouchClean) | | | |

Installatie

- Schroef de afschermkapdrager links/rechts met elk 2 schroeven aan de schermplaat vooraan.
- Schuif het ventilatiooster voorzichtig tot de aanslag naar binnen en bevestig met klemveer.

